

BULLETIN

MONTHLY NEWSLETTER

April, 2025



Nurturing inclusive learning communities

Welcome Back!

Head Teacher Update

We have just finished a very busy half term with lots of learning and fun activities. All the children have been involved in several new experiences as you will be able to see in the rest of the newsletter below.

I have been very proud of all the children when they have been out of school on various visits. They have been excellent role models which has given the staff the confidence to take them on more trips with some rich experiences planned in the summer term.

Exciting new sensory spaces!

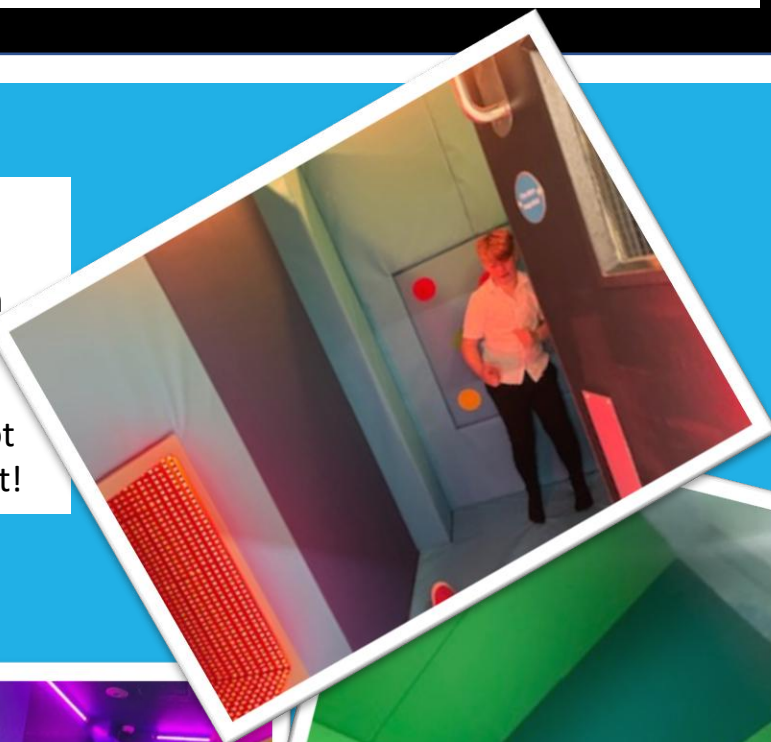
We were excited to come back after the holidays to our brand new Ocean and Woodland rooms. Both rooms have been totally remodelled with colour changing lights and sensory boards. So far we are really enjoying accessing them and cannot wait to show you at our next parent event!

Dates for your diary

Classes will be in touch about parent/carer afternoons.

Whales class will be swimming this half term.

5.5.25 – May Bank Holiday
Monday – School closed.



Engage Academy,
Park Road,
Batley, WF17 5LP

01924 476449
engageoffice@eat.uk.com



Leading Parent
Partnership Award

2021–2024



Dolphins Class

Coming up this half term....

Where in the world.....

Dolphins are becoming Geo Wonderers and learning about the UK and local areas. We will be looking at physical and human features and comparing similarities and differences between the countries in the UK.



Earth day!!!!

Last half term we explored lots of play based activities to develop our knowledge of our Earth and how to look after it. We planted some plants, created a poster to save the Earth and became scientists by making a fizzing Earth.



We learned though play. Here are some photos of what we been up to!



Industrial Museum

We visited the Industrial Museum to explore different types of transport and how it has changed from past to present day. We had lots of fun. Here are some photos of what we saw!



Below is a table to show which adults will be working in your class on each day.

Monday	Miss Thompson Mr Petts, Mrs Gilbert, Ms Kelly, Mr Dunston & Mrs Wright
Tuesday	Miss Thompson Mr Petts, Mrs Gilbert, Ms Kelly, Mr Dunston & Mrs Wright
Wednesday	Miss Thompson & Mrs Warrilow Mr Petts, Mrs Gilbert, Ms Kelly, Mr Dunston & Mrs Wright
Thursday	Mrs Warrilow Mr Petts, Mrs, Gilbert, Ms Kelly, Mr Dunston
Friday	Mrs Warrilow Mr Petts, Mrs, Gilbert, Ms Kelly, Mr Dunston

From Beans to Bars...

This half term, Penguins class will look at the continent Africa. We will look at the physical and human geography of Africa, compare life in African countries to ours and study Fair Trade – what it is and why it is important.



Our Learning

Penguins Class really loved our topic “Rampaging Romans”. We looked at modern Italy, we discovered what life was like for Roman soldiers, the myth of Romulus and Remus and made our own Roman inspired artwork using mosaic tiles. One of our favourite lessons had to be our research lesson, where the students were challenged to find a fact no one in the class knew about the Romans. We learnt that Romans used mouse brains to brush their teeth and washed their clothes in urine!



Whales Class



Fair Trade

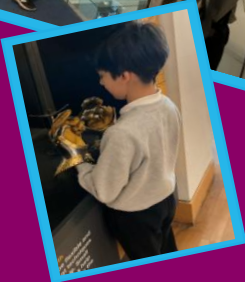
Our new topic this half term is 'Pack Your Suitcase' We will be using our geographical skills to compare African countries with the UK. We will also be looking into how Fair Trade has helped African farmers to be successful in growing and trading their crops with the UK and other countries. Especially chocolate!

Finally, we will be exploring a range of African artists from paintings to sculptures through to collages and the vibrant colours that they used. Yet again we will be busy this term!



Royal Armouries

Whales took a class trip to the Royal Armouries. They explored the tournament and war galleries looking at the weapons of past warriors, kings and noble men. They got to see the armour that they wore and also try on some of the items! Their verdict was that they were very heavy!



Our Learning

Whales have been debating if the Romans were heroes or villains? We learnt why the Romans invaded England and why they were such a strong army. We also looked into the past and the new ways of living that they introduced into England that are still present today.

We have also used our art skills to make Roman shields and recreate mosaic tiles that the rich Romans decorated their houses with.

Finally, we used our scientific knowledge and design skills to create catapults as we head towards our own Roman Gladiator Olympic challenge!



Incel Culture

PARENT GUIDE



The recent Netflix drama **Adolescence** has highlighted the troubling rise of incel (involuntary celibate) communities and their influence on young people. As a parent, it is important to understand this online subculture, recognise warning signs, and engage in open conversations with your child. This guide explains incel ideology, key terms, signs to look out for, and conversation starters to help you support your child. You can find further support on our website.

What is an incel?



The term **incel** stands for 'involuntary celibate' and refers to men who believe they are unable to form romantic or sexual relationships despite wanting to. Some incel communities foster resentment towards women, blaming them for their perceived misfortune. These forums (often online) can promote misogyny, victimhood, and, in extreme cases, radicalisation.

Key Incel Terminology

Red Pill – From The Matrix, refers to 'waking up' to the 'truth' of gender dynamics, as incels perceive them.

Chad – An attractive, successful man who is desirable to all women.

Stacy – An attractive woman who is seen as prioritising men like Chad.

Becky – An average woman, often contrasted with a Stacy.

Femoid/Fold – A dehumanising term, implying women are inferior.

Black Pill – Belief that nothing changes with self improvement or effort.

80/20 Rule – A theory suggesting that 80% of women are attracted to 20% of men, fuels resentment.

Andrew Tate – A key promoter of incel ideology.

Signs to Look Out For:

- Low self-esteem
- Use of incel language
- Hostility towards women
- Isolation and secrecy
- Increased frustration & anger

Conversation Starters:

- What do you think makes a healthy relationship?
- Is it fair to blame one group of people for our personal difficulties?
- How do you decide whether something you read online is trustworthy?



Safeguarding at Engage Academy

If you are worried or have any concerns then please talk to a member of the safeguarding team.

We all share a responsibility for our pupils' safety and wellbeing.

Whatever your concern may be, there will be someone who is happy to help you.

If you have a concern about a staff member, please see the Head Teacher, DSL or a DDSL. Contact 01924 476449.



Head Teacher

Alison Ward



Designated Safeguarding Lead (DSL)

Adam Davies



Deputy DSL

Dan Petts



Deputy DSL

Leon Henry



Deputy DSL

Ella Wray Holmes

If there is anything that you need to speak to staff about then please contact your class mobile phone number:

Dolphins: 07803 508257

Whales: 07803 508273

Penguins: 07803 508277